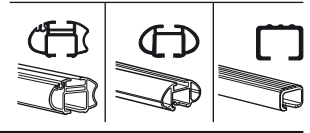
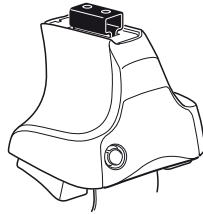


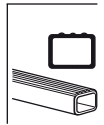
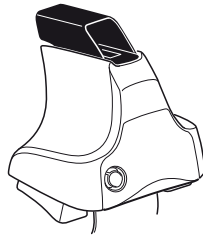
# Kit 1171

JAGUAR S-type, 4-dr Sedan, 99-03, 04-07

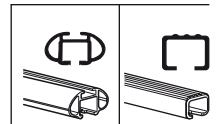
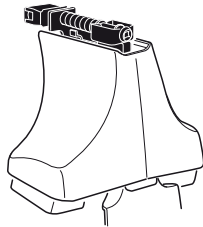
480R  
754



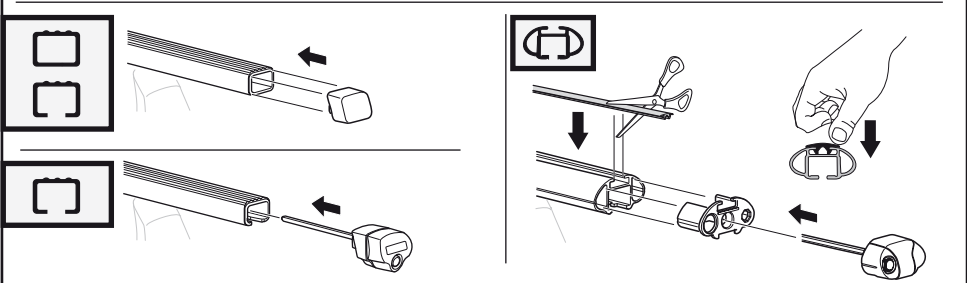
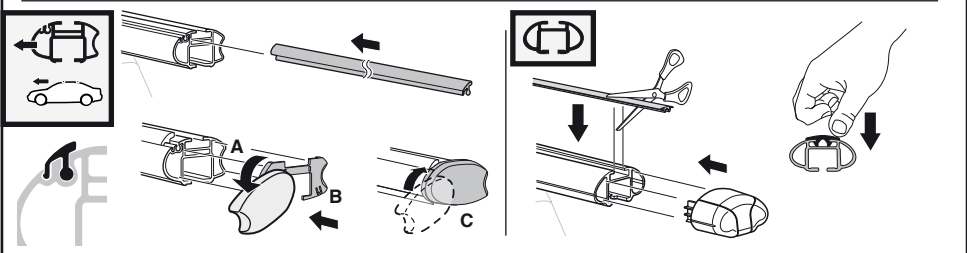
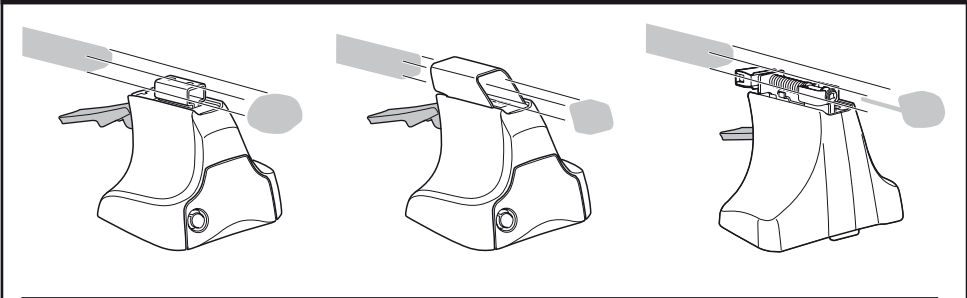
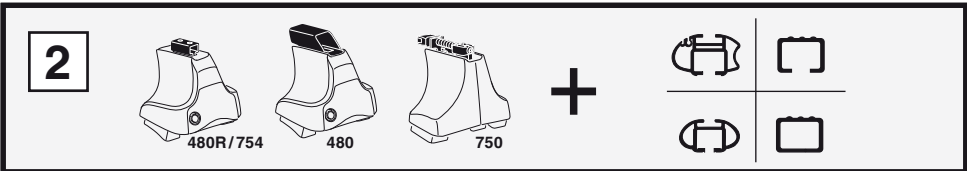
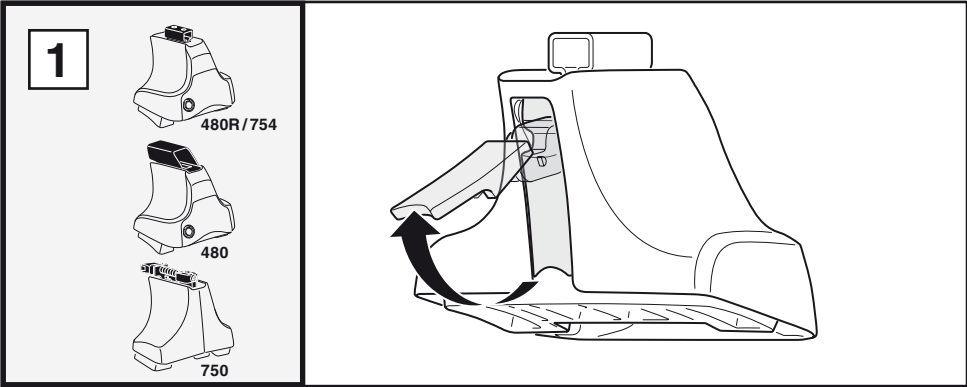
480

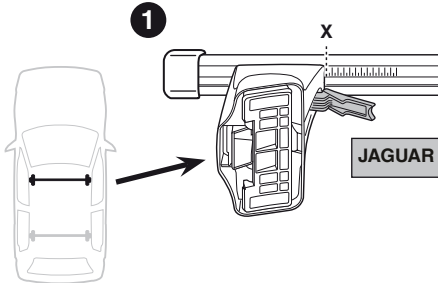
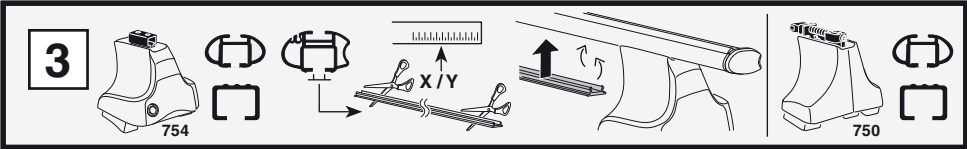


750

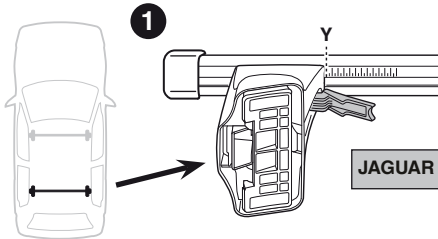


**Kit**

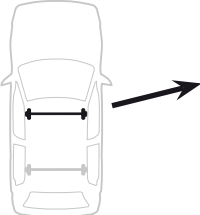
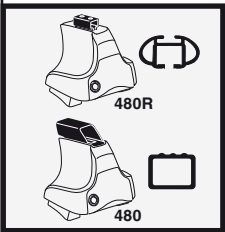




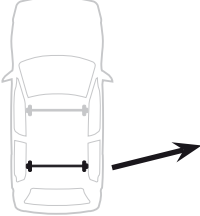
	X
JAGUAR S-type, 4-dr Sedan, 99-03, 04-07	31



	Y
JAGUAR S-type, 4-dr Sedan, 99-03, 04-07	34,5



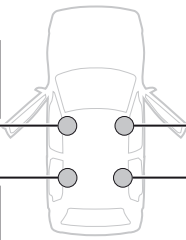
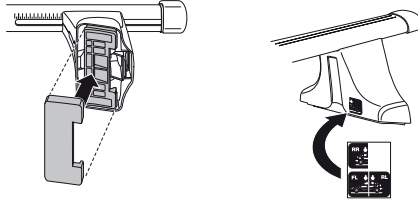
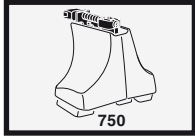
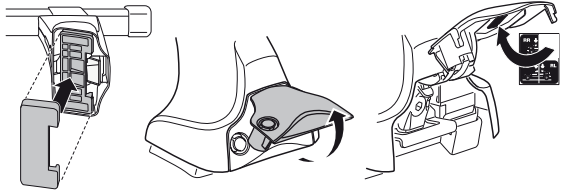
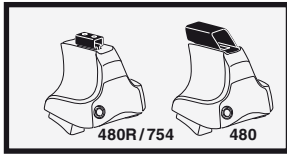
	X inch	X mm
JAGUAR S-type, 4-dr Sedan, 99-03, 04-07	37 <sup>7</sup> / <sub>8</sub> "	961 mm



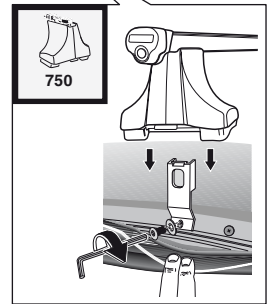
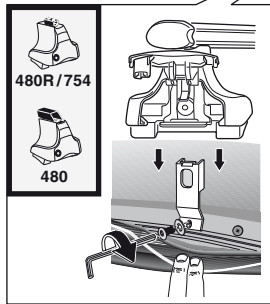
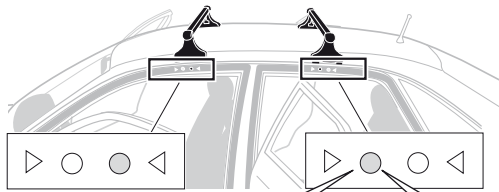
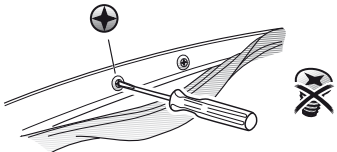
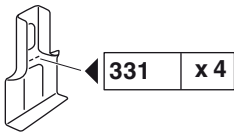
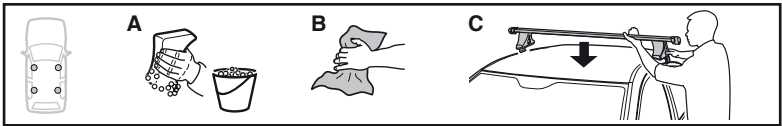
	Y inch	Y mm
JAGUAR S-type, 4-dr Sedan, 99-03, 04-07	39 <sup>1</sup> / <sub>4</sub> "	996 mm



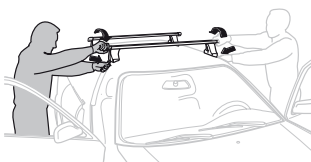
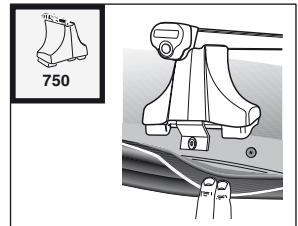
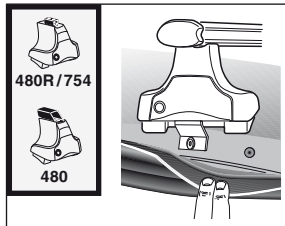
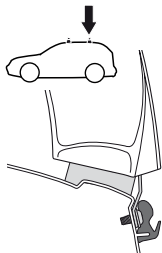
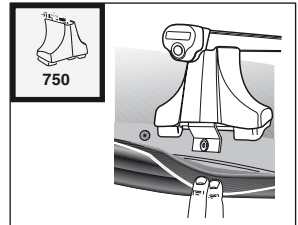
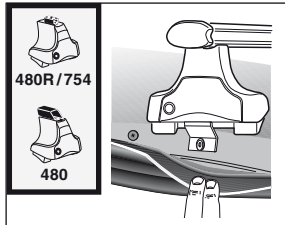
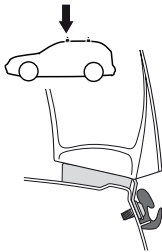
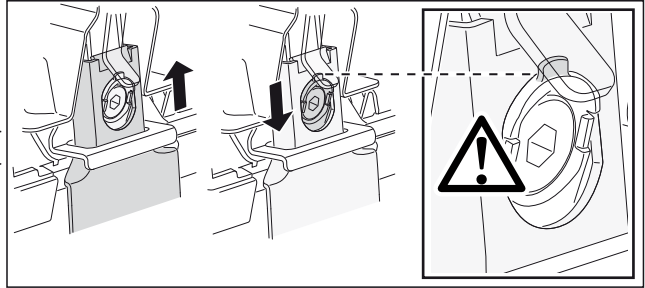
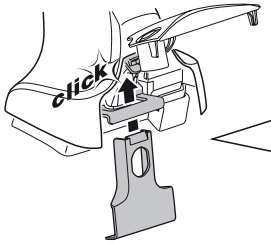
4



5



6



**GB/US** Tighten alternately  
**D** Die Schrauben abwechselnd anziehen  
**F** Serrer alternativement chaque côté  
**NL** Afwisselend aan de linker- en de rechterkant aandraaien  
**I** Alternare il serraggio delle viti  
**E** Apretar alternativamente  
**PT** Aperte alternadamente  
**S** Dra åt växelvis  
**FIN** Kierrä vuorotellen  
**EST** Pinguldage vaheldumisi  
**LAT** Pievelciet pamišus  
**LIT** Užsukinėkite pakaitomis  
**PL** Śruby dokręcaj naprzemiennie  
**RU** Затягивайте попеременно

**CZ** Pokręťta багаžníka dokręcaj dokręcaj naprzemiennie.  
**SK** Doťahujte striedavo  
**SLO** Privijajte izmenično.  
**HR** Naizmjениčno zategnite  
**HU** Egymástól függetlenül szorítandó  
**GR** Σφιγγετε εναλλάξ  
**TR** Dönüşümlü sıkın  
**中文** 交替拧紧  
**한국어** 번갈아 가며 조이십시오.  
**日本語** 交互に締め付けてください。  
**ไทย** ชับในแบบสลับ

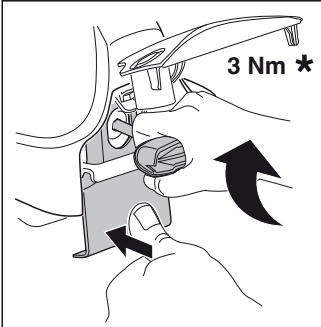
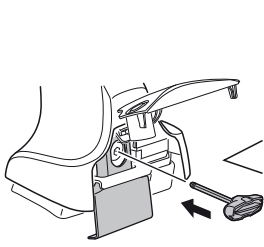
7



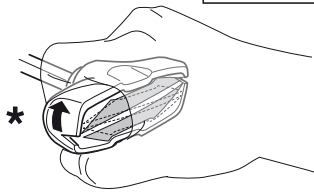
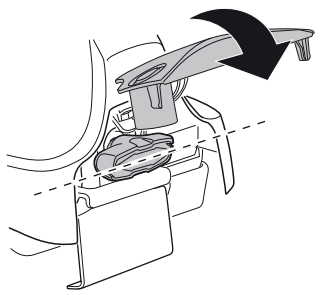
480R/754



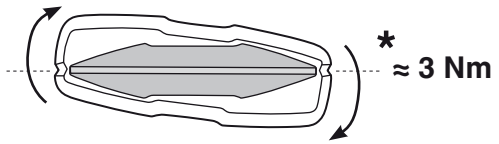
480



3 Nm \*

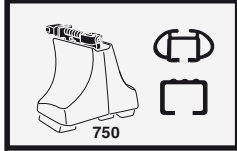


\*

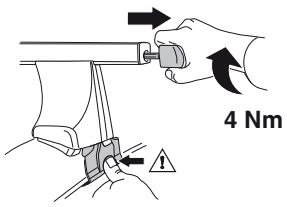


\*

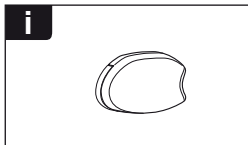
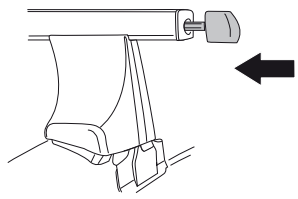
≈ 3 Nm



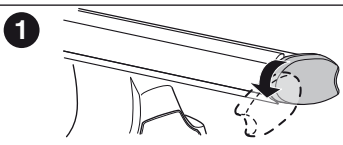
750



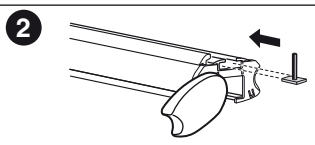
4 Nm



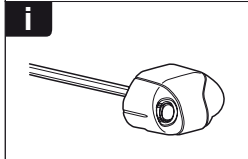
i



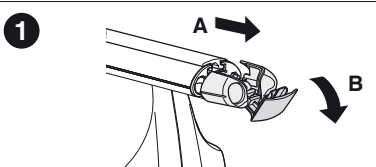
1



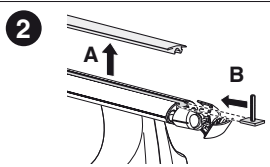
2



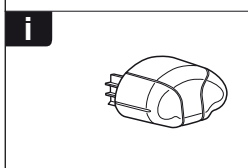
i



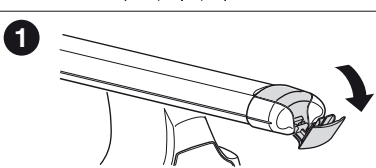
1



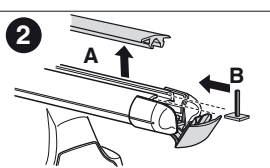
2



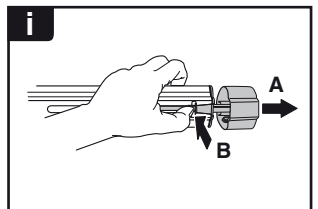
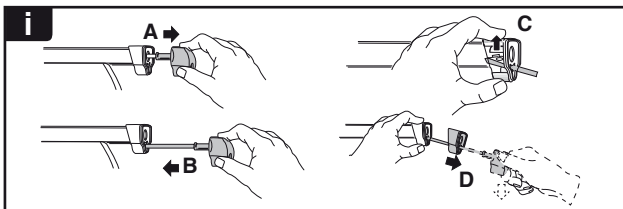
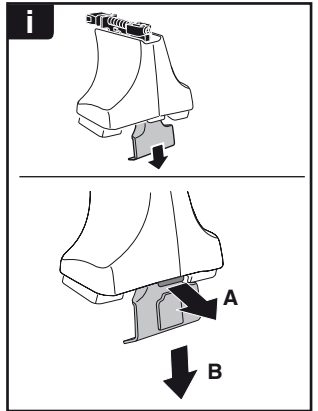
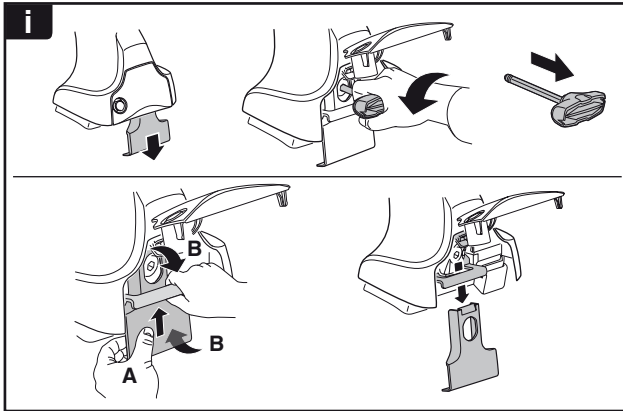
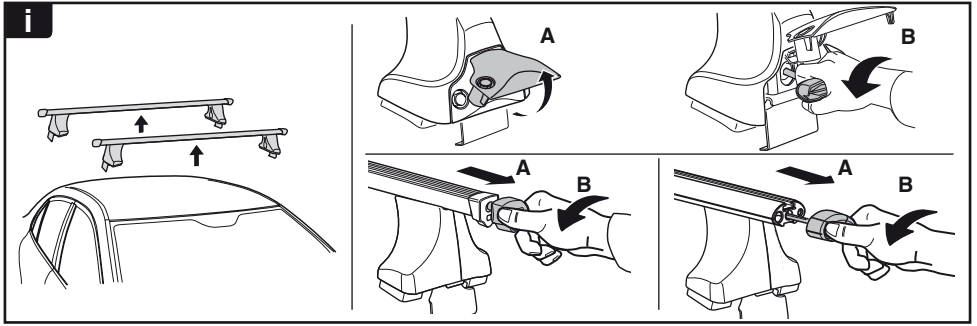
i



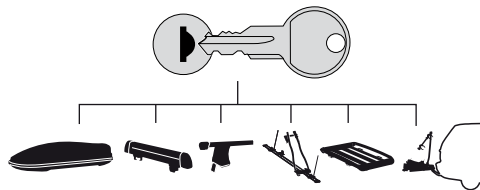
1



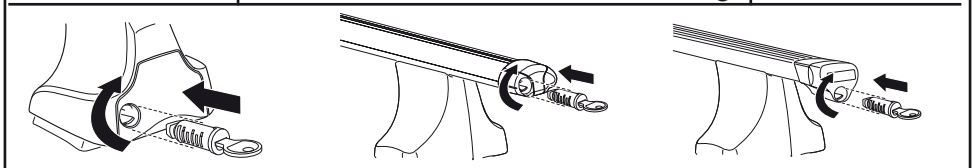
2



**THULE**  
SWEDEN  
**ONE  
KEY  
SYSTEM**



		(x4)
		(x6)
		(x8)
NA		(x10)
EUR		(x12)
ASIA		(x12)



WW ▶ Thule Sweden AB, Box 69, 330 33 Hillerstorp, SWEDEN  
NA ▶ Thule Inc., 42 Silvermine Road, Seymour, Connecticut 06483, USA

info@thule.com  
customer.service@thule.com

www.thule.com