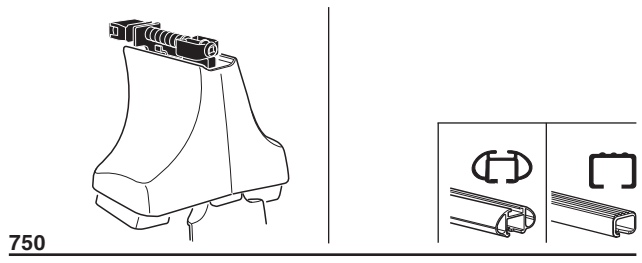
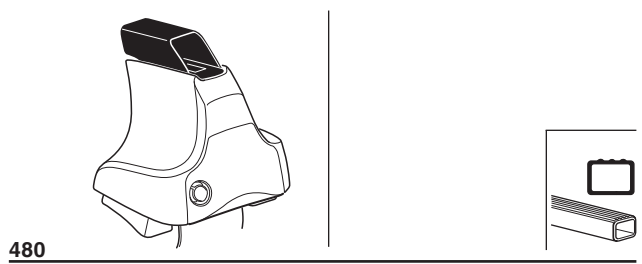
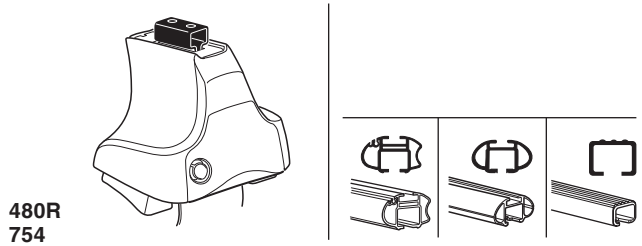
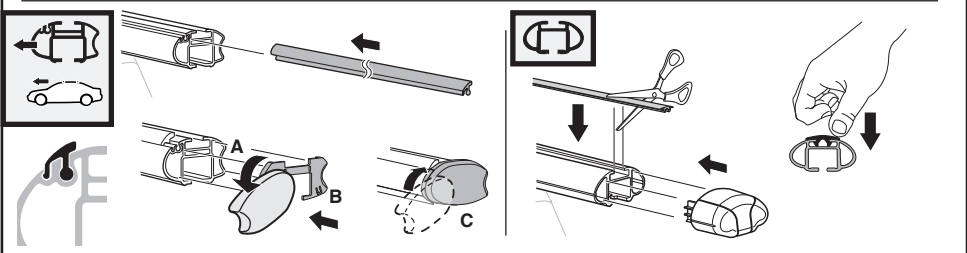
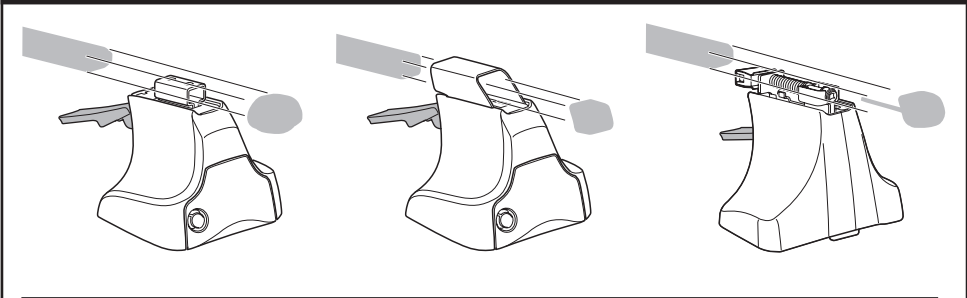


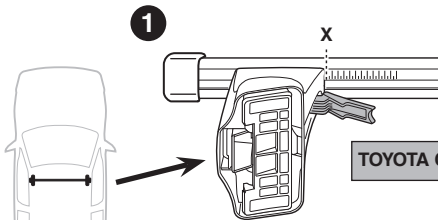
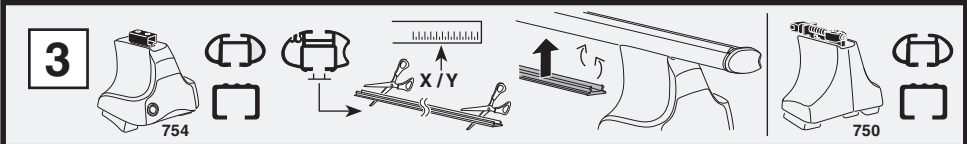
Kit 1482

TOYOTA Corolla Rumion, 5-dr Hatchback, 07-

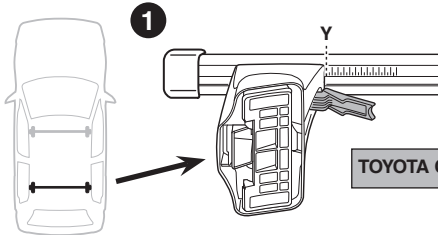


Kit

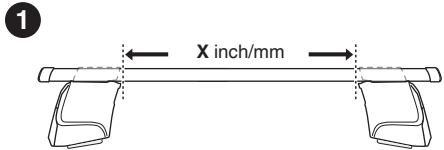
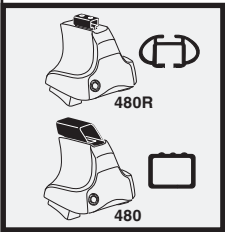




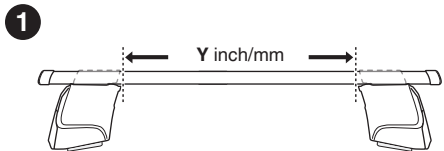
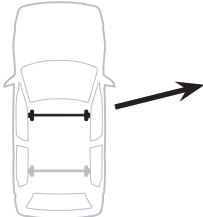
	X
TOYOTA Corolla Rumion, 5-dr Hatchback, 07-	50



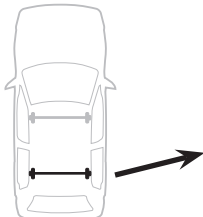
	Y
TOYOTA Corolla Rumion, 5-dr Hatchback, 07-	46,5



	X inch	X mm
TOYOTA Corolla Rumion, 5-dr Hatchback, 07-	45 ³ / ₈ "	1151 mm



	Y inch	Y mm
TOYOTA Corolla Rumion, 5-dr Hatchback, 07-	43 ⁷ / ₈ "	1116 mm



4

TOYOTA Corolla Rumion, 5-dr Hatchback, 07-

146



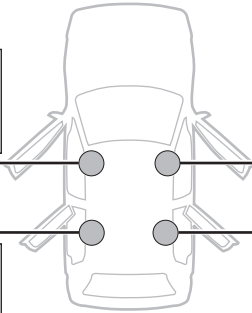
965



146



965



146



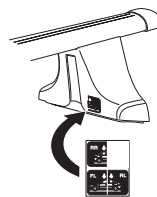
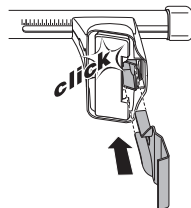
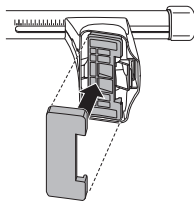
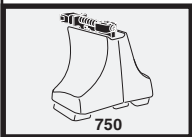
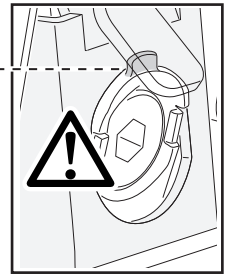
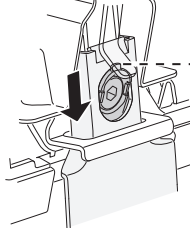
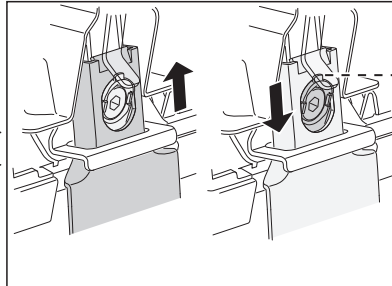
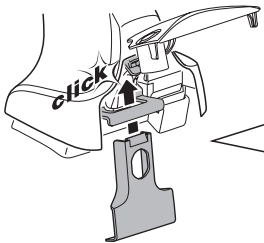
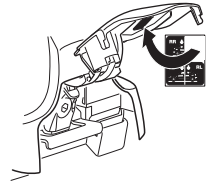
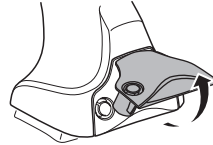
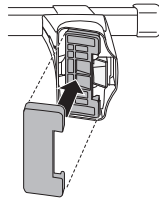
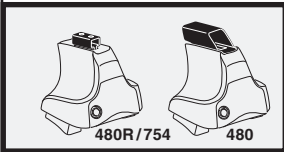
964



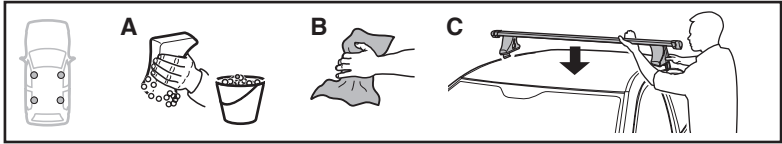
146



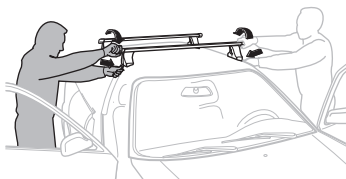
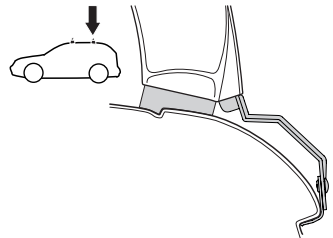
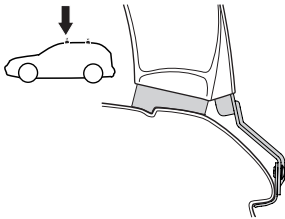
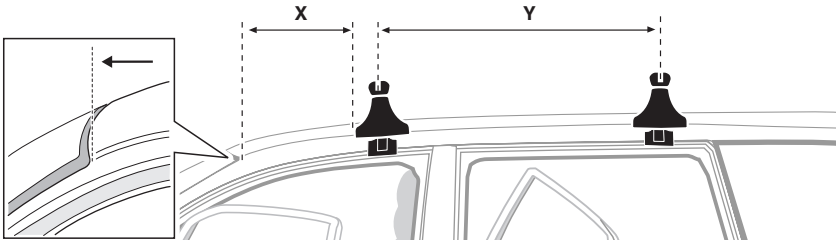
964



5



	X mm	Y mm	X inch	Y inch
TOYOTA Corolla Rumion, 5-dr Hatchback, 07-	530 mm	700 mm	20 ⁷ / ₈ "	27 ¹ / ₂ "



GB/US Tighten alternately

D Die Schrauben abwechselnd anziehen

F Serrer alternativement chaque côté

NL Afwisselend aan de linker- en de rechterkant aandraaien

I Alternare il serraggio delle viti

E Serrare alternativamente

PT Aperte alternadamente

S Dra åt växelvis

FIN Kierrä vuorotellen

EST Pinguldage vaheldumisi

LAT Pielieciet pamišus

LIT Užsukinėkite pakaitomis

PL Śruby dokręcaj naprzemiennie

RU Затягивайте попеременно

CZ Pokręťta bagazníka dokręcaj dokręcaj naprzemiennie.

SK Doťahujte striedavo

SLO Privijajte izmenično.

HR Naizmjenično zategnite

HU Egymástól függetlenül szorítandó

GR Σφιγγετε εναλλάξ

TR Dönüşümlü sıkın

中文 交替拧紧

한국어 번갈아 가며 조이십시오.

日本語 交互に締め付けてください。

ไทย ชันโนแบบสลับ

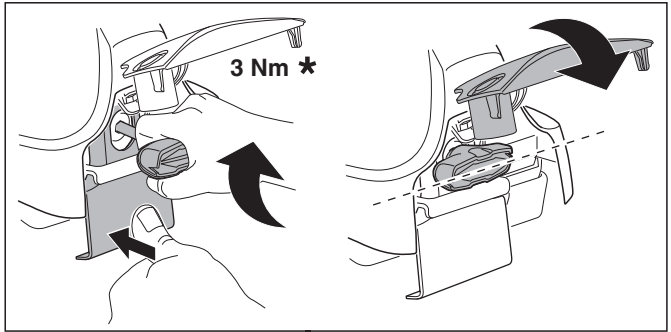
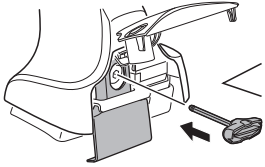
6



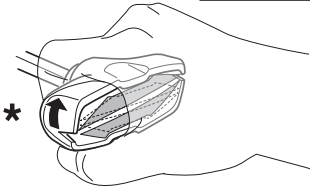
480R/754



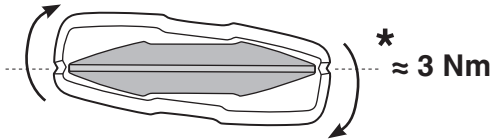
480



3 Nm *



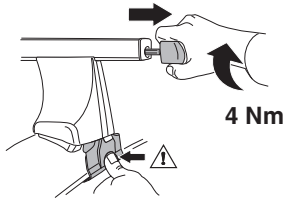
*



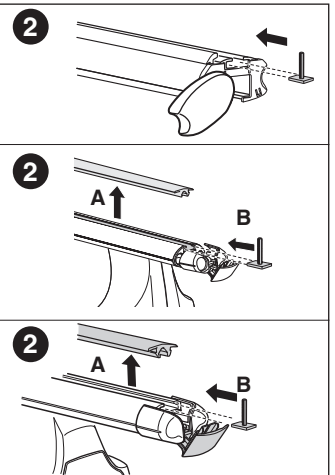
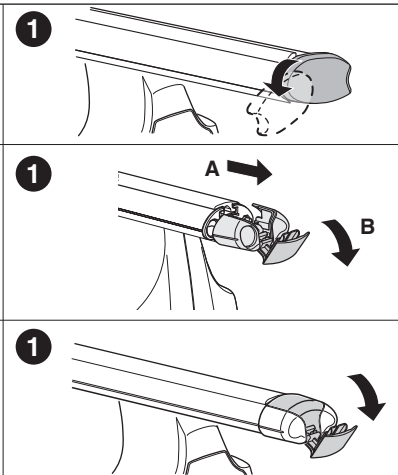
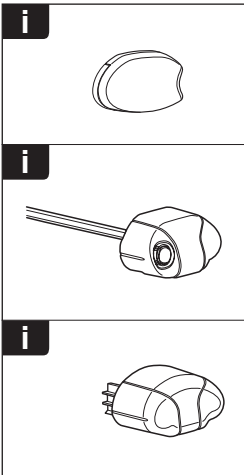
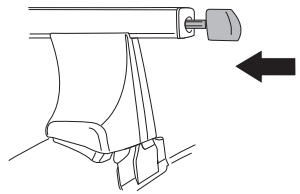
* ≈ 3 Nm

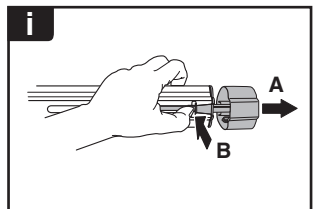
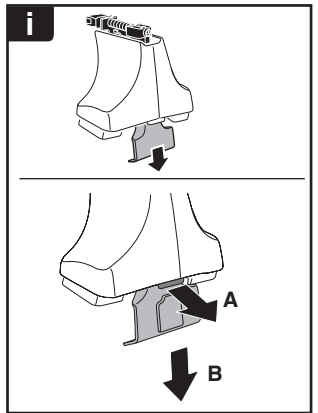
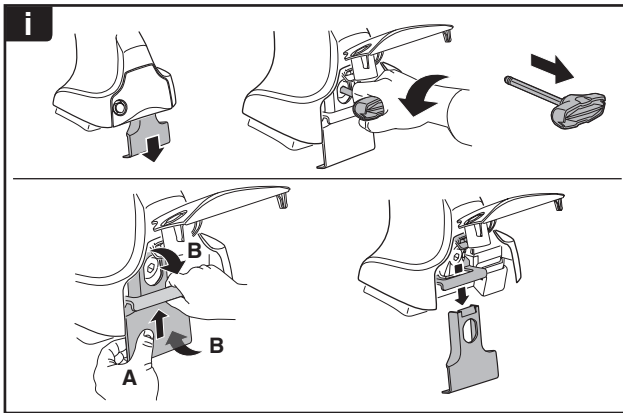
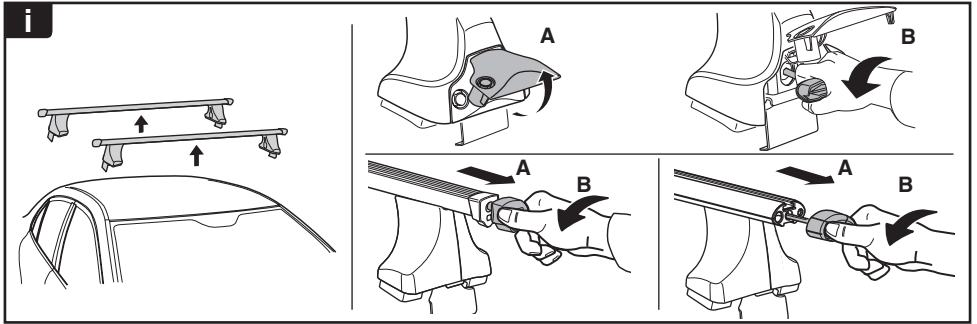


750

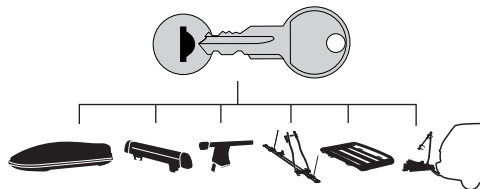


4 Nm

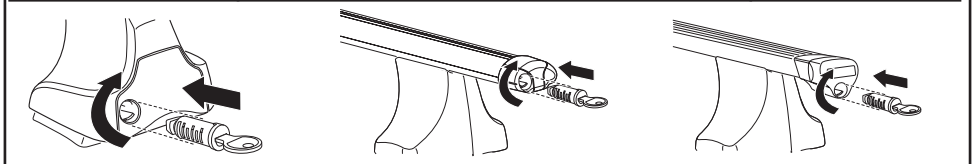




THULE
SWEDEN
**ONE
KEY
SYSTEM**



- 544 (x4)
- 596 (x6)
- 588 (x8)
- NA 510 (x10)
- EUR 452 (x12)
- ASIA



WW ▶ Thule Sweden AB, Box 69, 330 33 Hillerstorp, SWEDEN
NA ▶ Thule Inc., 42 Silvermine Road, Seymour, Connecticut 06483, USA

info@thule.com
customer.service@thule.com

www.thule.com